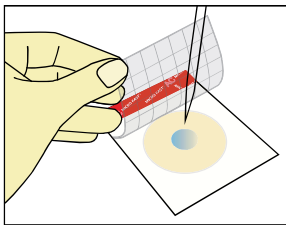


# MicroFast<sup>®</sup>

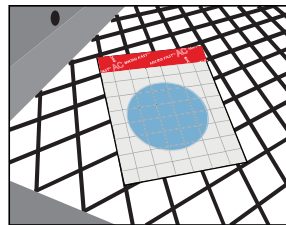
## Microbial Count Plates

### Reliable results, **Only 3 Steps**

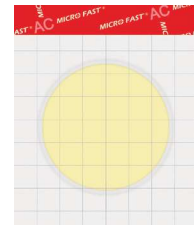
- **Inoculation** Lift the top film and add sample.
- **Incubation** Incubate the plates following the Instruction for Use.
- **Interpretation** Count the colonies.



Inoculation



Incubation



Interpretation

## Product Features

### Rapid diffusion technology

The sample dilution can quickly spread on the count plate without pressing the plate.

### Precise and consistent results

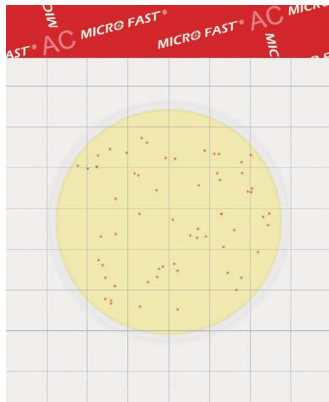
Self-developed microorganisms growing technology makes it easy for the growth of microorganisms with strict growth conditions.

### Easy interpretation

The product design is based on the principle of enzyme substrate color reaction. After cultivation, the result can be directly interpreted.

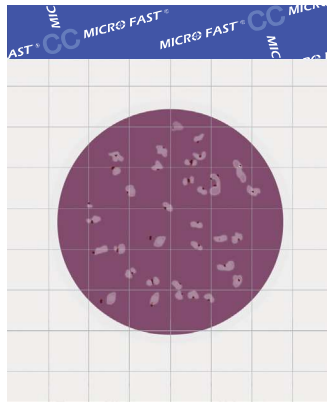
### Easy operation, work efficiently

Only 3 steps of operation, most of the microorganism tests can be completed within 24 hours, which shortens the testing time and improves culture efficiency.



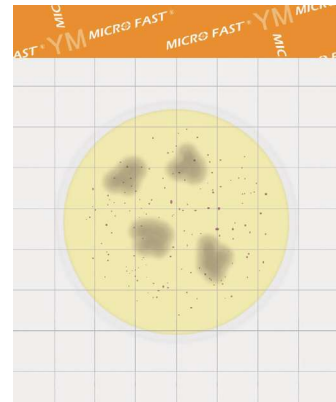
**MicroFast® Aerobic Count Plate (AC)**

Result in 48±1h  
 Culture temperature: 36±1°C  
 Interpretation: Red colonies  
 Product No.: LR1001  
 Identification: Quantitative



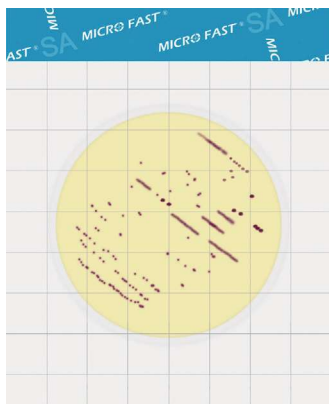
**MicroFast® Coliform Count Plate (CC)**

Result in 18-24h  
 Culture temperature: 36±1°C/44.5±0.2°C  
 for thermotolerant coliforms  
 Interpretation: Red colonies with bubbles  
 Product No.: LR1002  
 Identification: Quantitative



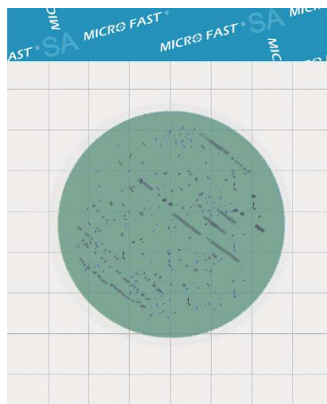
**MicroFast® Yeast & Mold (YM) Count Plate**

Result in 48h for Yeast  
 Result in 72h for Mold  
 Culture temperature: 28±1°C  
 Interpretation: Count red-violet colonies as yeast, red-violet colonies with irregular edges as mold.  
 Product No.: LR1003  
 Identification: Quantitative



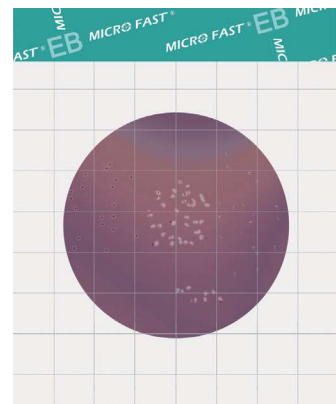
**MicroFast® Staphylococcus aureus (SA) Count Plate**

Result in 22 -26h  
 Culture temperature: 36±1°C  
 Interpretation: *Staphylococcus aureus* appears as pink line or dot colonies. Other colonies have to be checked using the Staph confirmation plate.  
 Product No.: LR1005  
 Identification: Quantitative/Qualitative



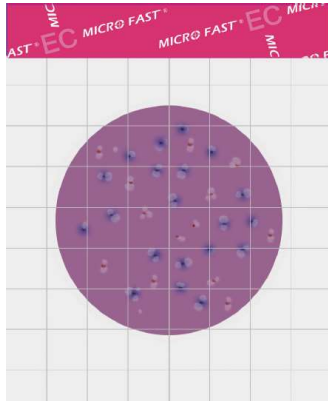
**MicroFast® Staphylococcus aureus (SA) Confirmation Plate**

Result in 1.5 -4h  
 Culture temperature: 36±1°C  
 Interpretation: Dark purple lines or dots  
 Product No.: LR1005Q  
 Identification: Quantitative/Qualitative



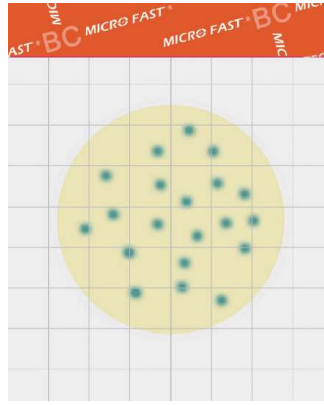
**MicroFast® Enterobacteriaceae (EB) Count Plate**

Result in 18 -24h  
 Culture temperature: 36±1°C  
 Interpretation: Count all red and yellow colonies with or without bubbles.  
 Product No.: LR1011  
 Identification: Quantitative



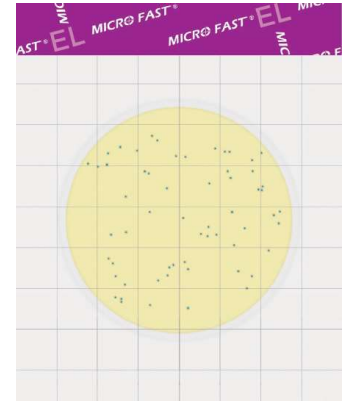
**MicroFast® Coliform & E. coli (EC) Count Plate**

Result in 24±2 h  
 Culture temperature: 36±1°C  
 Interpretation: Count blue colonies with bubbles as E. coli, count blue and red colonies with bubbles as coliform.  
 Product No.: LR1007  
 Identification: Quantitative



**MicroFast® Bacillus cereus (BC) Count Plate**







Result in 18 -24 h  
 Culture temperature: 30°C  
 Interpretation: blue-green cluster colonies  
 Product No.: LR1010  
 Identification: Quantitative



**MicroFast® Environmental Listeria (EL) Count Plate**

Result in 18 -24 h  
 Culture temperature: 36±1°C  
 Interpretation: blue-green colonies  
 Product No.: LR1008  
 Identification: Quantitative

## Ordering information

Product Name		Catalog No.	Specification
Aerobic Count Plate		LR1001	25 pcs
Coliform Count Plate		LR1002	25 pcs
Yeast & Mold Count Plate		LR1003	25 pcs
Staphylococcus aureus Count Plate		LR1005	25 pcs
Staphylococcus aureus Confirmation Plate		LR1005Q	25 pcs
Coliform & E. coli Count Plate		LR1007	25 pcs
Enterobacteriaceae Count Plate		LR1011	25 pcs
Bacillus cereus Count Plate		LR1010	25 pcs
Environmental Listeria Count Plate		LR1008	25 pcs