

# Corning® LSE™ Nutating Mixer

Three-dimensional gentle mixer

CORNING



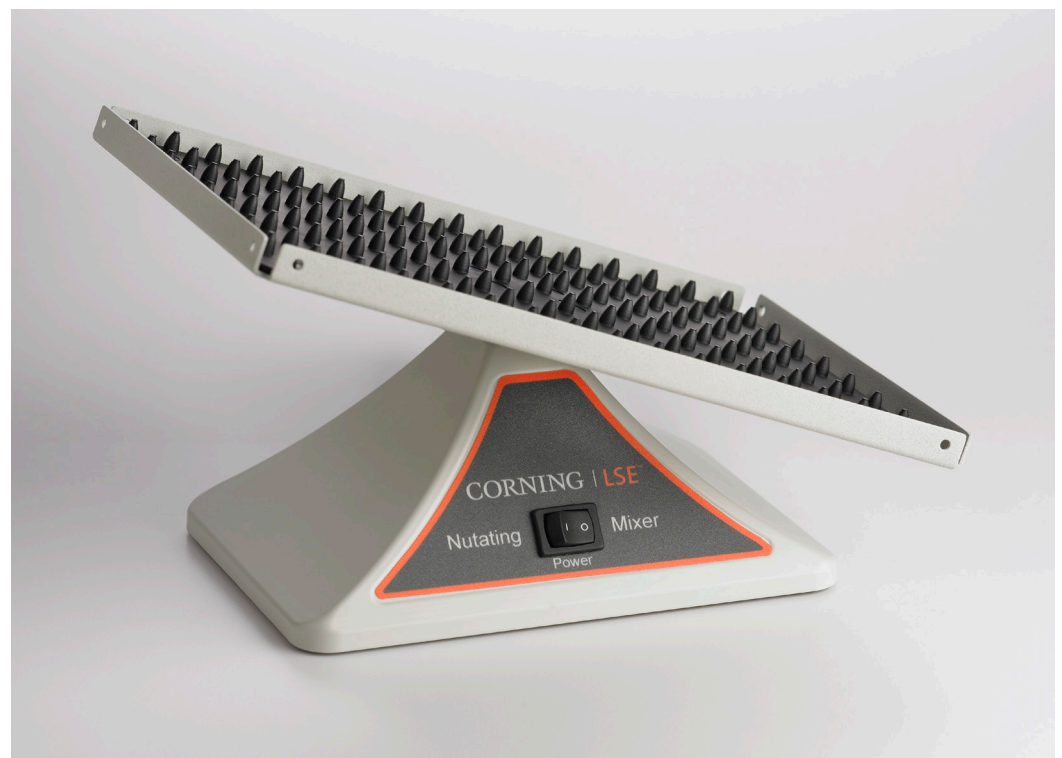
Tubes may be placed directly on the dimpled mat. The dimple pattern is configured to allow blood tubes and centrifuge tubes to rotate at a fixed 20 degree angle in a secure manner.

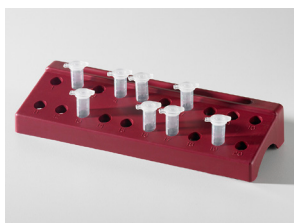
The Corning LSE Nutating Mixer is a compact mixer that combines the motion of an orbital shaker and a platform rocker to produce a continuous three-dimensional agitation. The output demonstrates a thorough yet gentle mix without foaming. This mixer is safe to use in temperature-controlled environments.

The pitch and speed of the Corning LSE Nutating Mixer are designed to provide the optimal motion for mixing and resuspending samples in small volume vessels such as blood and centrifuge tubes. The dimpled mat on the platform surface holds tubes firmly in place while the unit is powered on. The mat exhibits an array of tube capacity as it can hold 60 x 1.5 mL tubes, 30 pediatric blood tubes (3 mL), 21 standard blood tubes (7 mL), 17 x 15 mL or 9 x 50 mL tubes.

## Features and Benefits

- ▶ Ideal for mixing large strands of DNA into solution in microcentrifuge tubes or mixing blood into a buffer in large centrifuge tubes
- ▶ Small footprint
- ▶ 3D motion is ideal for mixing and resuspending samples
- ▶ Compatible with cold room or incubator use





## Specifications

Mixing Action	3-dimensional rocking motion
Mixing Speed	24 rpm fixed (120V) 20 rpm fixed (230V)
Platform Tilt Angle	20 degrees fixed
Platform Dimensions	9.5 x 6.75 in. (24 x 17 cm)
Mixer Dimensions (L x W x H)	9.5 x 5.75 x 6.75 in. (24 x 14.6 x 17 cm)
Mixer Weight	1.88 lbs. (0.85 kg)
Platform Load Capacity	1.75 lbs. (0.8 kg) balanced
Platform Capacity without Stacking	60 x 1.5 mL microcentrifuge tubes 30 x 3 mL pediatric blood tubes 17 x 15 mL centrifuge tubes 21 x 7 mL standard blood tubes 9 x 50 mL centrifuge tubes
Ambient Operating Range	5°C to 40°C up to 80% humidity, non-condensing
Electrical	120V, 50/60Hz, 0.03 A 230V, 50/60Hz, 0.015 A

## Ordering Information

### Corning® LSE™ Nutating Mixer

Cat. No.	Description	Qty/Cs
6720	Corning LSE Nutating Mixer with dimpled mat, 120V (US plug)	1
6721	Corning LSE Nutating Mixer with dimpled mat, 230V (EU plug)	1
6722	Corning LSE Nutating Mixer with dimpled mat, 230V (UK plug)	1

### Related Products

Cat. No.	Description	Qty/Cs
MCT-150-C	Axygen® 1.5 mL boil-proof microcentrifuge tubes, clear	5,000
TR8210	Axygen microcentrifuge tube support rack, red, 20 x 1.5 x 2.0 mL	2
430052	Corning 15 mL centrifuge tubes, PP, plug seal cap, racked, sterile	500
430489	Corning 2 mL cryogenic vial, internal threaded, round bottom, PP	500

For more specific information on claims, visit [www.corning.com/certificates](http://www.corning.com/certificates).

**Warranty/Disclaimer:** Unless otherwise specified, all products are for research use only.\* Not intended for use in diagnostic or therapeutic procedures. Corning Life Sciences makes no claims regarding the performance of these products for clinical or diagnostic applications. \*Cryogenic vials are considered US class I medical devices.

For additional product or technical information, visit [www.corning.com/lifesciences](http://www.corning.com/lifesciences) or call 800.492.1110. Outside the United States, call +1.978.442.2200 or contact your local Corning sales office.

# CORNING

**Corning Incorporated**  
Life Sciences

836 North St.  
Building 300, Suite 3401  
Tewksbury, MA 01876  
t 800.492.1110  
t 978.442.2200  
f 978.442.2476

[www.corning.com/lifesciences](http://www.corning.com/lifesciences)

**ASIA/PACIFIC**  
**Australia/New Zealand**  
t 61 427286832

**Chinese Mainland**  
t 86 21 3338 4338  
f 86 21 3338 4300

**India**  
t 91 124 4604000  
f 91 124 4604099

**Japan**  
t 81 3-3586 1996  
f 81 3-3586 1291

**Korea**  
t 82 2-796-9500  
f 82 2-796-9300

**Singapore**  
t 65 6572-9740  
f 65 6735-2913

**Taiwan**  
t 886 2-2716-0338  
f 886 2-2516-7500

**EUROPE**  
CSEurope@corning.com

**France**  
t 0800 916 882  
f 0800 918 636

**Germany**  
t 0800 101 1153  
f 0800 101 2427

**The Netherlands**  
t 020 655 79 28  
f 020 659 76 73

**United Kingdom**  
t 0800 376 8660  
f 0800 279 1117

**All Other European Countries**  
t +31 (0) 206 59 60 51  
f +31 (0) 206 59 76 73

**LATIN AMERICA**  
grupoLA@corning.com

**Brazil**  
t 55 (11) 3089-7400

**Mexico**  
t (52-81) 8158-8400